



DISPENSE METERS AND VALVES



Applied
Lubrication
Technology Inc.

12 French Drive, Mono, ON L(W 5W1
Phone (519) 942-8800 E-Mail: sales@appliedlubrication.com

Most Common Hand Held Meters



37739-55 Standard Digital Meter Recommended for industrial, automotive, bus, truck & heavy equipment applications for dispensing lubricating oils, hydraulic fluids, gear lubricants and pure anti-freeze (Ethylene Glycol). Meter is set to "0" and counts "up" as fluid is dispensed. Operator must shut meter off when desired amount of fluid has been dispensed. (no preset features) Meter can count up to 99.99 litres when programmed for two decimal places or 999.99 litres when programmed for one decimal place. Meter comes with easy to read digital display, non re-settable totalizing counter, 10" flexible dispense hose, non-drip nozzle and 1/2" NPT(F) inlet swivel. Uses two AAA batteries. Maximum flow rate 20 litres per minute. Maximum operating pressure 1,000 P.S.I.



1515L Standard Mechanical Meter Recommended for industrial and automotive applications for dispensing lubricating oils, hydraulic fluids, gear lubricants and transmission fluids. It is best suited to applications where no more than 10 litres at a time is to be dispensed. Meter is set to "0" and counts "up" as fluid is dispensed. Operator must shut meter off when desired amount of fluid has been dispensed. (no preset features). Comes with 10 litre dial face, non re-settable totalizing counter, 10" flexible dispense hose, non-drip nozzle and 1/2" NPT(F) inlet swivel. Maximum flow rate 12 litres per minute. Maximum operating pressure 1,000 P.S.I.



37709-55 Digital Preset Meter Recommended for industrial, automotive, truck, bus and fleet operations for dispensing engine oil, hydraulic oil, transmission fluids, gear lubes, etc. The meter can be used in either standard, preset or batch mode. In standard mode, the operator determines when the desired volume of fluid has been dispensed and releases the trigger shutting the meter off. In Preset mode, the operator keys in the desired volume of fluid to be dispensed, pulls the trigger, the meter will count of the preset quantity and will shut off automatically. The meter can also be set to dispense the identical preset volume of volume of fluid repeatedly which makes it ideal for assembly or batch applications. Meter comes with easy to read digital display, non-resettable totalizing counter, 6" rigid extension with non-drip nozzle and 1/2" NPT(F) inlet swivel. The meter uses standard AAA batteries and features an easy to read LCD display. Includes a low battery indicator and will save settings if power is interrupted. Maximum dispense volume 99,999 units. Maximum Preset volume 99.9 units. Maximum flow rate 20 litres per minute. Maximum operating pressure 1,000 P.S.I.



1520L Mechanical Preset Meter Recommended for industrial, truck, bus and fleet operations where preset dispense quantities of more than 15 litres are required. The meter is capable of metering lubricating oils, hydraulic fluids, transmission fluids, etc. Not Recommended for car & small truck (small engine) service Meter is "preset" to the desired amount to be dispensed. Once the trigger is pulled, the meter will count back (down) to "0" and automatically shut off. Meter comes with , non-resettable totalizing counter, 6" rigid extension with non-drip nozzle and 1/2" NPT(F) inlet swivel. Maximum flow rate 16 litres per minute. Maximum operating pressure 1,000 P.S.I.

ELECTRONIC METERS

9.2 gpm

18.5 gpm

26.4 gpm

RAASM's electronic meters, besides gauging the liquid delivered, can show instant flow rates, provide a reset total and allow the setting of different units of measurement. RAASM's electronic meters are suitable for a wide variety of fluids, from low to medium to high viscosities, including lubricants, diesel fuel, antifreeze, window wash liquid and other fluids compatible with the material of the meter.



P/N 37780-55

P/N 37781-55

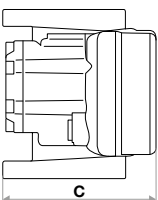
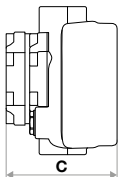
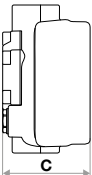
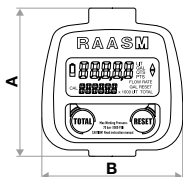
P/N 37782-55

Flow rate	9.25 gpm
Compatible fluids	oil and similar
Body's material	aluminum
Gear's material	POM
Inlet	1/2" NPT (f)
Outlet	1/2" NPT (f)
Max operating pressure	1015 psi
Burst pressure	2900 psi
Accuracy	± 0.3 %
Net weight	1 lb
Overall dimensions (A - B - C)	3.7" - 3.5" - 2.2"
Packaging - Weight	No. 1 0.05 ft³ lb 1.9

Flow rate	18.5 gpm
Compatible fluids	oil and similar
Body's material	aluminum
Gear's material	POM
Inlet	3/4" NPT (f)
Outlet	3/4" NPT (f)
Max operating pressure	1015 psi
Burst pressure	2900 psi
Accuracy	± 0.3 %
Net weight	2 lb
Overall dimensions (A - B - C)	3.7" - 3.6" - 3.0"
Packaging - Weight	No. 1 0.06 ft³ lb 2.2

Flow rate	26.42 gpm
Compatible fluids	oil and similar
Body's material	aluminum
Gear's material	POM
Inlet	1" NPT (f) + Flange
Outlet	1" NPT (f) + Flange
Max operating pressure	1015 psi
Burst pressure	2900 psi
Accuracy	± 0.3 %
Net weight	2.4 lb
Overall dimensions (A - B - C)	4.3" - 3.6" - 3.9"
Packaging - Weight	No. 1 0.2 ft³ lb 3

OVERALL DIMENSIONS (inches)



Battery low level indicator

Unit: Liter - Gallon
- Pint - Quart

5 digit total

6 digit non
resettable total
and instant flow-rate

Total may be multiplied
by 10 - x 100 - x 1000



Flow direction reversibility

FLOW RATE
indication

TOTAL or RESET TOTAL

Total-Unit: Liter - Gallon

PERFORMANCE

Precision ± 0.3 %

Repeatability 0.2 %

Pressure loss
< 7 psi at max flow rate

ELECTRONIC METERS

23.8 gpm

31.7 gpm

10.5 gpm



P/N 33710-55

P/N 33711-55

P/N 37785-55

Flow rate	23.8 gpm
Compatible fluids	diesel fuel
Body's material	aluminum
Gear's material	POM
Inlet	3/4" NPT (f)
Outlet	3/4" NPT (f)
Max operating pressure	1015 psi
Burst pressure	2900 psi
Accuracy	± 0.3 %
Net weight	2 lb
Overall dimensions (A - B - C)	3.7" - 3.6" - 3.0"
Packaging - Weight	No. 1 0.1 ft³ lb 2

31.7 gpm
diesel fuel
aluminum
POM
1" NPT (f) + Flange
1" NPT (f) + Flange
1015 psi
2900 psi
± 0.3 %
2.4 lb
4.3" - 3.6" - 3.9"
No. 1 0.2 ft³ lb 3

10.5 gpm
antifreeze and windshield washing fluid
oxidized aluminum (zancofuso®)
PVDF
1/2" NPT (f)
1/2" NPT (f)
1015 psi
2900 psi
± 0.3 %
1 lb
3.7" - 3.5" - 2.3"
No. 1 0.05 ft³ lb 1.9

Sealed battery compartment assures continuous electronic contact in rugged working conditions

The use of 4 magnets provides superior control and precision measurement

Robotically welded electronics board equipped with a wide LCD screen

Double layer protective cover provides an air tight seal with the aluminum body

Meter uses standard "off the shelf" two 1.5 v AAA batteries

Aluminum body with special coating suitable for antifreeze and windshield washing fluid

Oval gears made of POM or PVDF are highly resistant to fatigue and offer excellent chemical resistance

A ribbon wire connection between the buttons and the electronic board provide superior connectivity

Raised buttons on the membrane produce an improved operational feel



CONTROL HANDLES FOR OIL AND SIMILAR

Designed with a balanced opening valve and a sensitive and calibrated trigger for easy delivery in low and high pressure conditions.

► Series 40AP-1/2" 1015 psi
Series 40AL-1/2" 1015 psi



► Series 65AP-1/2" 1450 psi



► Series 70AP-3/4" 1450 psi



► Series 85AP-3/4" 1450 psi



CONTROL HANDLES FOR OIL

Series 40AP-1/2" - Series 40AL-1/2"

Oil handle series 40AP - 40AL in aluminum alloy (see page 142) equipped with:

- balanced opening valve in brass, for even pressure on the lever in low and high pressure conditions
- inlet swivel joint 1/2" NPT (f)
- lever locking button (only for series 40AP)
- flexible extension with semiautomatic nozzle \varnothing 0.63"
- fluid identification colored caps (supplied for all the range)

Series 65AP-1/2"

Oil handle series 65AP in aluminum alloy (see page 143) equipped with:

- balanced opening valve in brass, for even pressure on the lever in low and high pressure conditions
- inlet swivel joint 1/2" NPT (f)
- lever locking button
- flexible extension with semiautomatic nozzle \varnothing 0.83"
- fluid identification colored caps (supplied for all the range)

Series 70AP-3/4"

Oil handle series 70AP in aluminum alloy (see page 144) equipped with:

- balanced opening valve in brass, for even pressure on the lever in low and high pressure conditions
- inlet swivel joint 3/4" NPT (f)
- lever locking button
- flexible extension with semiautomatic nozzle \varnothing 1.38"
- fluid identification colored caps (supplied for all the range)

Series 85AP-3/4"

Oil handle series 85AP high capacity in aluminum alloy (see page 145) equipped with:

- balanced opening valve in brass, for even pressure on the lever in low and high pressure conditions
- inlet swivel joint 3/4" NPT (f)
- lever locking button
- straight flexible extension with semiautomatic high delivery nozzle \varnothing 1.38"

	Series 40AP-1/2" Series 40AL-1/2"	Series 65AP-1/2"	Series 70AP-3/4"	Series 85AP-3/4"
Delivery	10.6 gpm	17.2 gpm	18.5 gpm	22.5 gpm
Max. pressure	1015 psi	1450 psi	1450 psi	1450 psi
Inlet union	1/2" NPT (f)	1/2" NPT (f)	3/4" NPT (f)	3/4" NPT (f)
Seals	Viton®	Viton®	Viton®	Viton®

Colored caps

(included in series
40AP - 40AL
65AP - 70AP)





OIL METERED CONTROL HANDLES

Series 40AP-1/2" - 40AL-1/2"

P/N 37740-55

Grip in aluminum alloy for oil handle equipped with 1/2" NPT (f) inlet swivel joint, 3/8" BSP (f) outlet - lever locking button. For max pressure and flow rate refer to page 141



P/N 37731-55

Oil handle equipped with 1/2" NPT (f) inlet swivel joint, filter, rigid terminal, semiautomatic drip-catcher nozzle \varnothing 0.63" (P/N 38016-55) and lever locking button

P/N 37768-55

Oil handle with electronic meter equipped with 1/2" NPT (f) inlet swivel joint, filter, rigid terminal, screw drip-catcher nozzle \varnothing 0.63" (P/N 38106-55) and lever locking button and electronic meter (P/N 37780-55)

P/N 37789-55

Oil handle equipped as 37768-55 but with semiautomatic drip-catcher nozzle \varnothing 0.63" (P/N 38016-55)

P/N 38148-55

Oil handle equipped as 37768-55 but with automatic drip-catcher nozzle \varnothing 0.63" (P/N 38116-55) and without lever locking button



P/N 37738-55

Oil handle equipped with 1/2" NPT (f) inlet swivel joint, filter, flexible terminal, semiautomatic drip-catcher nozzle \varnothing 0.63" (P/N 38016-55) and lever locking button

P/N 38147-55

Oil handle with electronic meter equipped as P/N 37738-55 but with automatic drip-catcher nozzle \varnothing 0.63" (P/N 38116-55) and without lever locking button. With electronic meter (P/N 37780-55)

P/N 37739-55

Oil handle with electronic meter P/N 37780-55 equipped with 1/2" NPT (f) inlet swivel joint, filter, flexible terminal, semiautomatic drip-catcher nozzle \varnothing 0.63" (P/N 38016-55) and lever locking button

P/N 37754-55

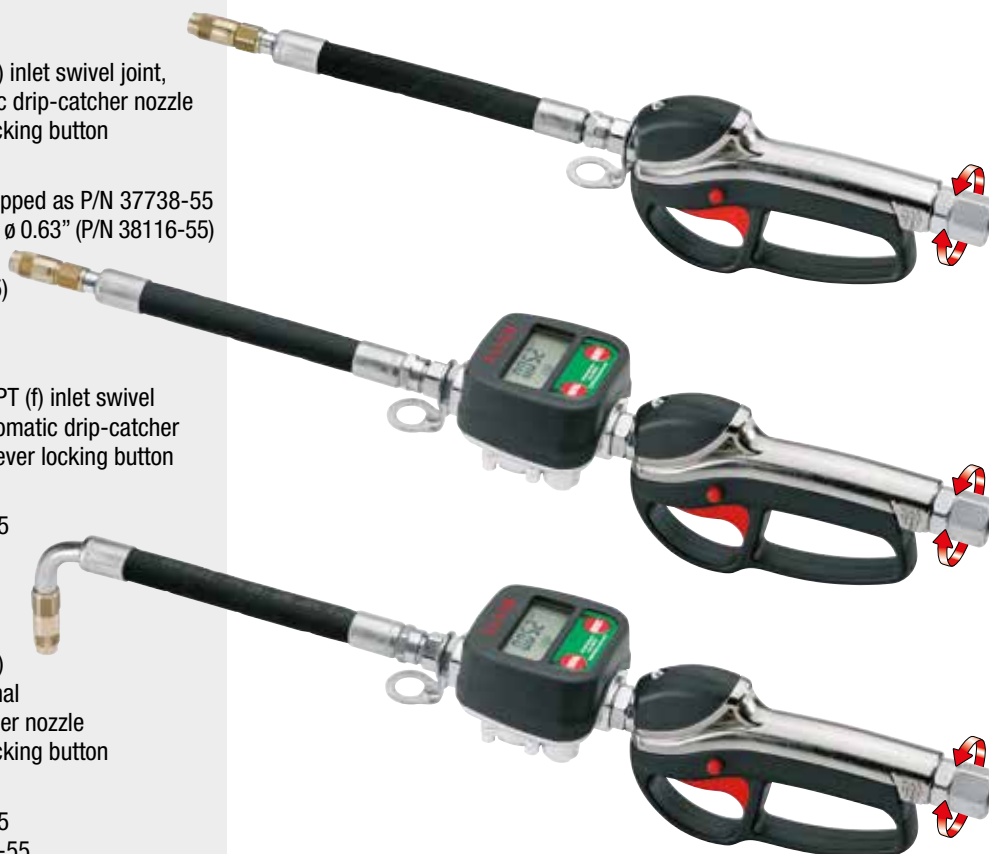
Oil handle equipped as P/N 37739-55 but with screw drip-catcher nozzle \varnothing 0.63" (P/N 38106-55)

P/N 37741-55

Oil handle equipped with 1/2" NPT (f) inlet swivel joint, filter, flexible terminal 90° spout, semiautomatic drip-catcher nozzle \varnothing 0.63" (P/N 38016-55) and lever locking button

P/N 37786-55

Oil handle equipped as P/N 37741-55 but with electronic meter P/N 37780-55

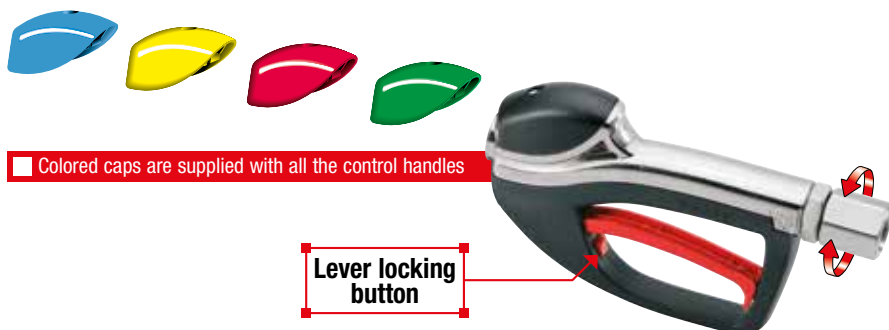




OIL METERED CONTROL HANDLES Series 65AP-1/2"

P/N 37750-55

Grip in aluminum for oil handle equipped with 1/2" NPT (f) inlet swivel joint, filter, 1/2" BSP (f) outlet and lever locking button
For max pressure and flow rate refer to page 141



P/N 37753-55

Oil handle equipped with 1/2" NPT (f) inlet swivel joint, filter, rigid terminal, semiautomatic drip-catcher nozzle \varnothing 0.83" and lever locking button

P/N 37779-55

Oil handle with electronic meter P/N 37780-55 equipped with 1/2" NPT (f) inlet swivel joint, filter, rigid terminal, semiautomatic drip-catcher nozzle \varnothing 0.83" and lever locking button



P/N 37761-55

Oil handle equipped with 1/2" NPT (f) inlet swivel joint, filter, flexible terminal, semiautomatic drip-catcher nozzle \varnothing 0.83" and lever locking button

P/N 37774-55

Oil handle with electronic meter P/N 37780-55 equipped with 1/2" NPT (f) inlet swivel joint, filter, flexible terminal, semiautomatic drip-catcher nozzle \varnothing 0.83" and lever locking button





OIL METERED CONTROL HANDLES

Series 70AP-3/4"

P/N 37775-55

High delivery oil grip equipped with 3/4" NPT (f) inlet swivel joint, filter, 3/4" NPT (f) outlet and lever locking button. For max pressure and flow rate refer to page 141



P/N 37777-55

High flow rate oil handle equipped with 3/4" NPT (f) inlet swivel joint, filter, rigid terminal 45°, semiautomatic drip-catcher nozzle ø 1.38" and lever locking button



P/N 37798-55

High flow rate oil handle with electronic meter P/N 37781-55 equipped with 3/4" NPT (f) inlet swivel joint, filter, rigid terminal 45°, semiautomatic drip-catcher nozzle ø 1.38" and lever locking button



P/N 37776-55

High flow rate oil gun equipped with 3/4" NPT (f) inlet swivel joint, filter, flexible terminal, semiautomatic drip-catcher nozzle ø 1.38" and lever locking button



P/N 37797-55

High flow rate oil gun with electronic meter P/N 37781-55 equipped with 3/4" NPT (f) inlet swivel joint, filter, flexible terminal, semiautomatic drip-catcher nozzle ø 1.38" and lever locking button





OIL METERED CONTROL HANDLES

Series 85AP-3/4"

P/N 33150-55

High delivery oil grip equipped with 3/4" NPT (f) inlet swivel joint, filter, 3/4" NPT (f) outlet and lever locking button. For max pressure and flow rate refer to page 141



P/N 33152-55

High delivery oil handle grip equipped with 3/4" NPT (f) inlet swivel joint, filter, lever locking button, rigid terminal and drip-catcher nozzle ø 1.38"



P/N 33147-55

High delivery oil handle grip with electronic meter P/N 37781-55 equipped with 3/4" NPT (f) inlet swivel joint, filter, lever locking button, rigid terminal and drip-catcher nozzle ø 1.38"



P/N 33151-55

High delivery oil handle grip, equipped with 3/4" NPT (f) inlet swivel joint, flexible extension and drip-catcher nozzle ø 1.38"



P/N 33146-55

High delivery oil handle grip with electronic meter P/N 37781-55, 3/4" NPT (f) inlet swivel joint, flexible extension and drip-catcher nozzle ø 1.38"





ANTIFREEZE METERED CONTROL HANDLES Series 40AP-1/2"

P/N 37793-55

Antifreeze handle with electronic meter P/N 37785-55 equipped with 1/2" NPT (f) inlet swivel joint, filter, flexible terminal and semiautomatic drip-catcher nozzle \varnothing 0.63"



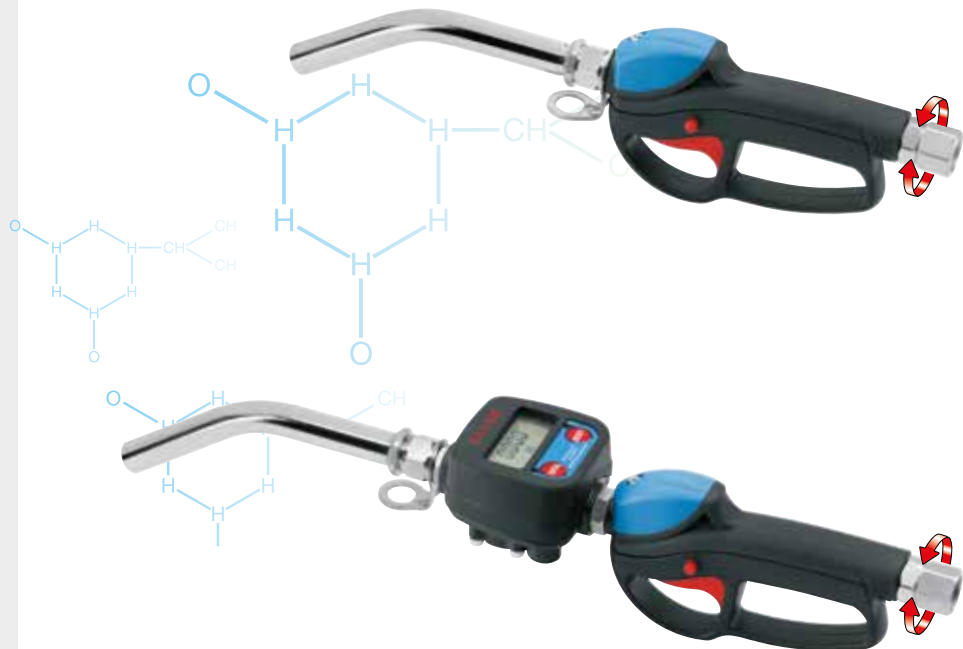
WINDSHIELD WASHING LIQUID METERED CONTROL HANDLES Series 40AN-1/2"

P/N 33445-55

Windshield washing liquid handle equipped with 1/2" NPT (f) inlet swivel joint, filter, high flow rate rigid terminal

P/N 33446-55

Windshield washing liquid handle with electronic meter P/N 37785-55 equipped with 1/2" NPT (f) inlet swivel joint, filter, high flow rate rigid terminal





MECHANICAL AND PRESET DIGITAL CONTROL HANDLES

P/N 38190-55

Preset digital dispensing control handle for oil equipped with:

- inlet swivel joint 1/2" NPT (f)
- flexible terminal
- automatic closing nozzle \varnothing 0.55"
- standard AA batteries
- stores up to 6 preset quantities plus last quantity



Article not manufactured by RAASM

Compatible fluids	oil and similar
Inlet	1/2" NPT (f)
Min. delivery	0.26 gpm
Max. delivery	5.25 gpm
Max. pressure	1015 psi
Accuracy	+/- 0.5%
Max. viscosity	SAE 240
Fluid temperature	max 122 °F
Packaging - Weight	No. 1 0.35 ft³ lb 4.4

P/N 37700-55

Mechanical metered control handle for oil, equipped with:

- inlet swivel joint 1/2" NPT (f)
- flexible extension
- semiautomatic nozzle \varnothing 0.63"
- quarter and gallon indicator with gallon totalizer



Article not manufactured by RAASM

Compatible fluids	oil and similar
Inlet	1/2" NPT (f)
Min. delivery	0.26 gpm
Max. delivery	8 gpm
Max. pressure	1015 psi
Accuracy	+/- 0.5%
Max. viscosity	SAE 240
Fluid temperature	max 122 °F
Packaging - Weight	No. 1 0.35 ft³ lb 5.7

HANDLES ACCESSORIES

Oil handles Series 40AP-1/2" - 40AL-1/2"



- **P/N 38015-55**
Semiautomatic
drip-catcher ø 0.39"



- **P/N 38016-55**
Semiautomatic
drip-catcher 0.63"

- **P/N 38106-55**
Screw
drip-catcher 0.63"

- **P/N 38116-55**
Automatic
drip-catcher 0.63"



- **P/N 38017-55**
Semiautomatic
drip-catcher ø 0.32"



- **P/N 38018-55**
Semiautomatic
drip-catcher ø 0.32"
with curved spout



- **P/N 38009-55**
Flexible extension
with P/N 38016-55



- **P/N 38010-55**
Flexible extension
with P/N 38016-55



- **P/N 38013-55**
Rigid extension 45°
with P/N 38016-55



- **P/N 38012-55**
High delivery rigid
extension with
free outlet ø 0.79"



- **P/N 38014-55**
Flexible terminal with
semiautomatic curved
drip-catcher nozzle ø 0.32"



Lever locking
button



- **P/N 37740-55**
Grip in aluminum
alloy with 1/2" NPT (f) inlet
swivel joint, 3/8" BSP (f)
outlet, and lever
locking button

- **P/N 38062-55**
Swivel joint
for oil handle,
1/2" BSP (m)
x 1/2" NPT (f)

Oil handles Series 65AP-1/2"



- **P/N 38034-55**
Semiautomatic
drip-catcher ø 0.83"



- **P/N 38035-55**
Semiautomatic
drip-catcher ø 1.06"



- **P/N 38033-55**
Flexible extension
with P/N 38034-55



- **P/N 38031-55**
Rigid extension 45°
with P/N 38034-55



- **P/N 38032-55**
High delivery rigid
extension free
outlet ø 0.79"



Lever locking
button



- **P/N 37750-55**
Grip in aluminum alloy
with inlet swivel
joint 1/2" NPT (f), 1/2" BSP
(f) outlet, and lever
locking button

- **P/N 38063-55**
Swivel joint
for oil handle,
inlet 1/2" BSP (m)
x 1/2" NPT (f)

HANDLES ACCESSORIES

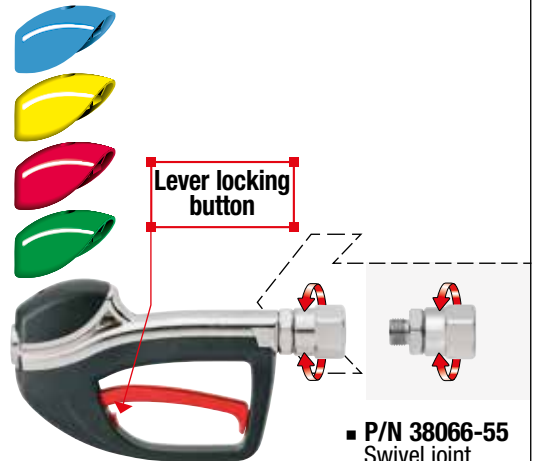
Oil handles Series 70AP-3/4" - 85AP-3/4"

■ **P/N 38040-55**
High delivery semiautomatic
drip-catcher ø 1.38"

■ **P/N 38037-55**
High delivery
flexible extension
with P/N 38040-55

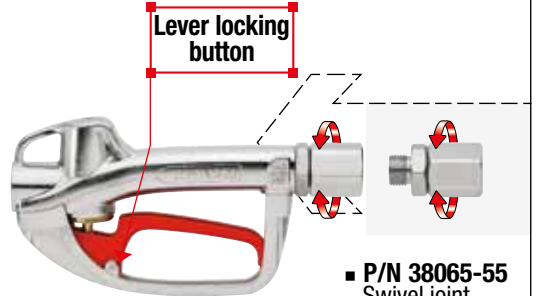
■ **P/N 38038-55**
High delivery
rigid extension 45°
with P/N 38040-55

■ **P/N 38039-55**
High delivery
rigid extension
with free outlet ø 1.02"



■ **P/N 37775-55**
Grip in aluminum alloy with inlet
swivel joint 3/4" NPT (f), 1/2" BSP
(f) outlet, and lever locking button

■ **P/N 38066-55**
Swivel joint
for oil handle,
inlet 1/2" BSP (m)
x 3/4" NPT (f)



■ **P/N 33150-55**
Grip in aluminum alloy with
inlet swivel joint 3/4" NPT (f),
3/4" NPT (f) outlet, and lever
locking button

■ **P/N 38065-55**
Swivel joint
for oil handle,
3/4" BSP (m)
x 3/4" NPT (f)

High delivery grip Series 3/4"

Example of used 3/4" oil gun with
quick coupler for tank refilling

Inlet filter
supplied with all our oil,
antifreeze, windshield liquid
delivery gun

Inlet filter

